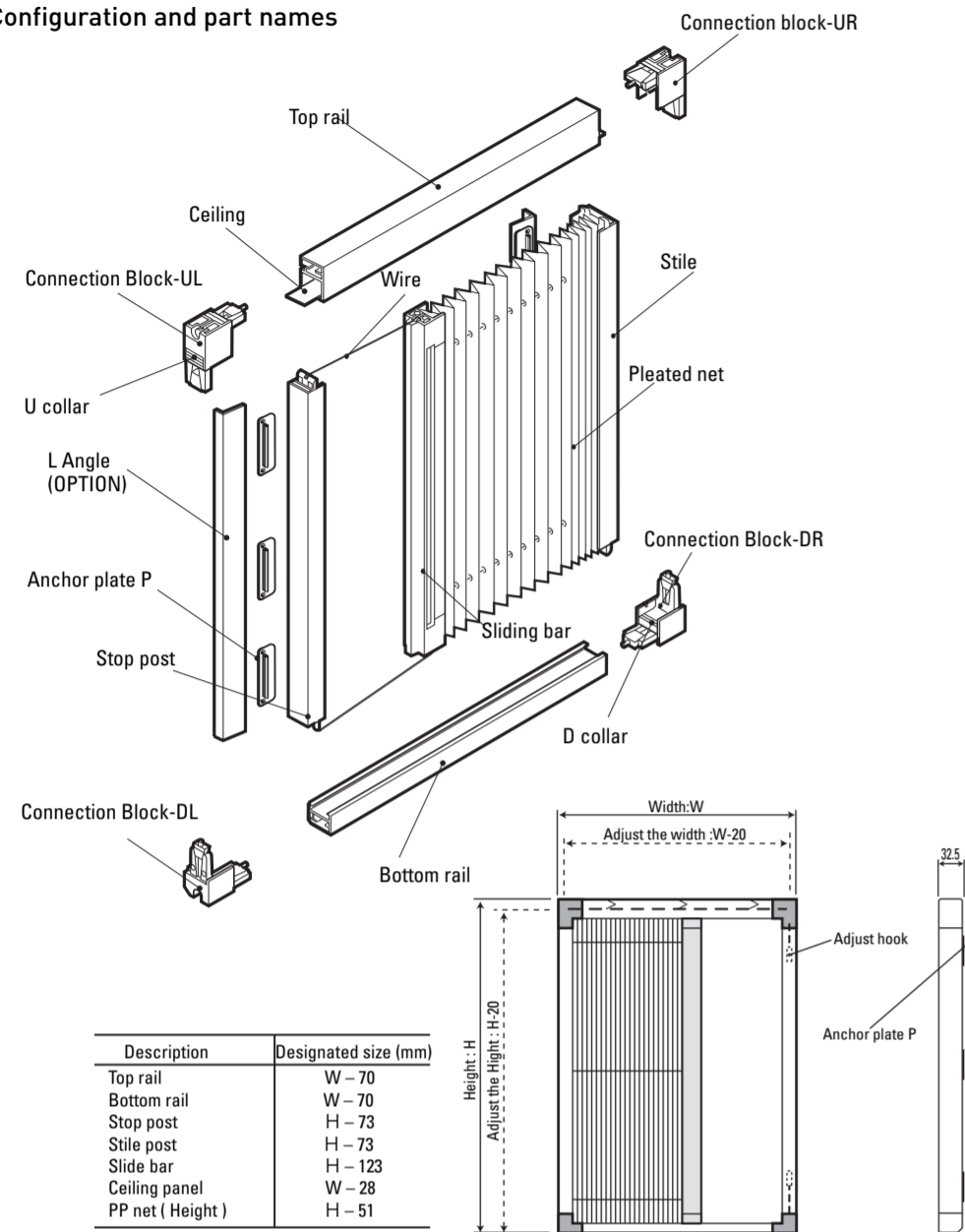


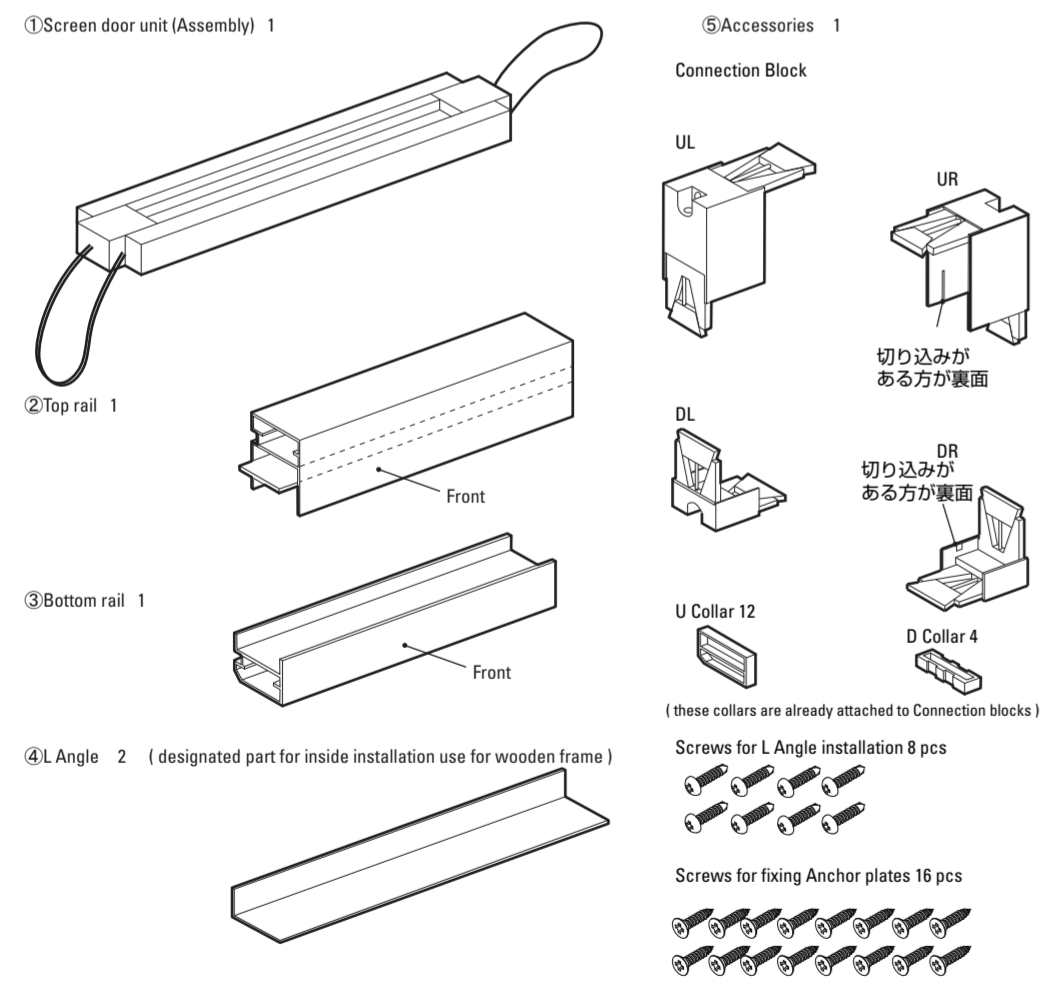
Metaco Pleated Net Front Fix Installation Guide

Thank you for purchasing a Pleat Net. Please read carefully and install the insect screen properly.

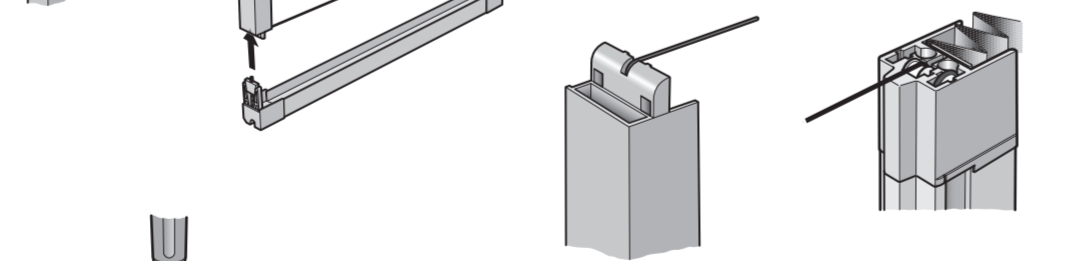
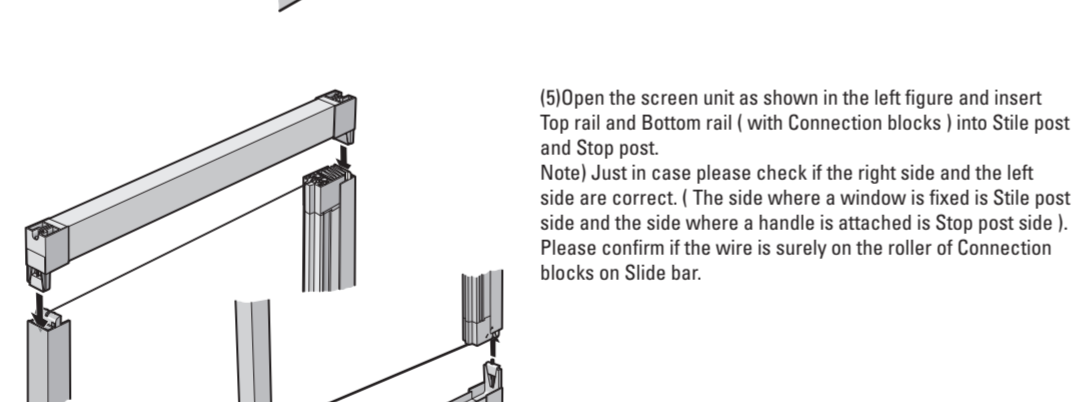
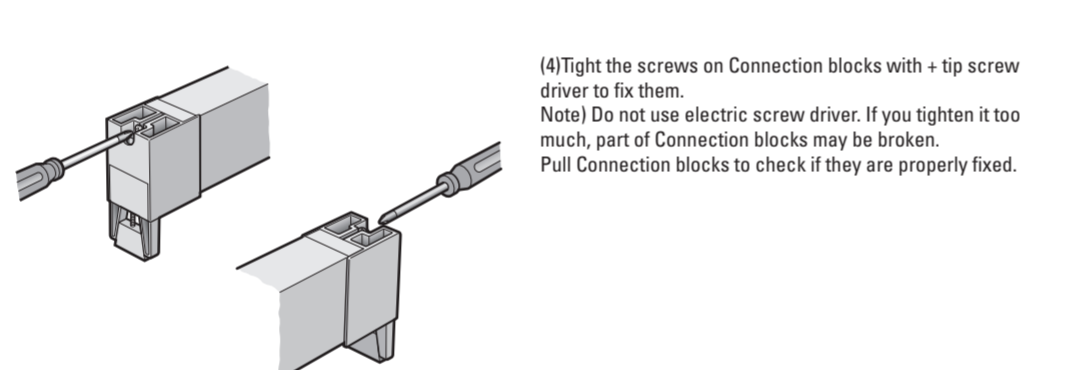
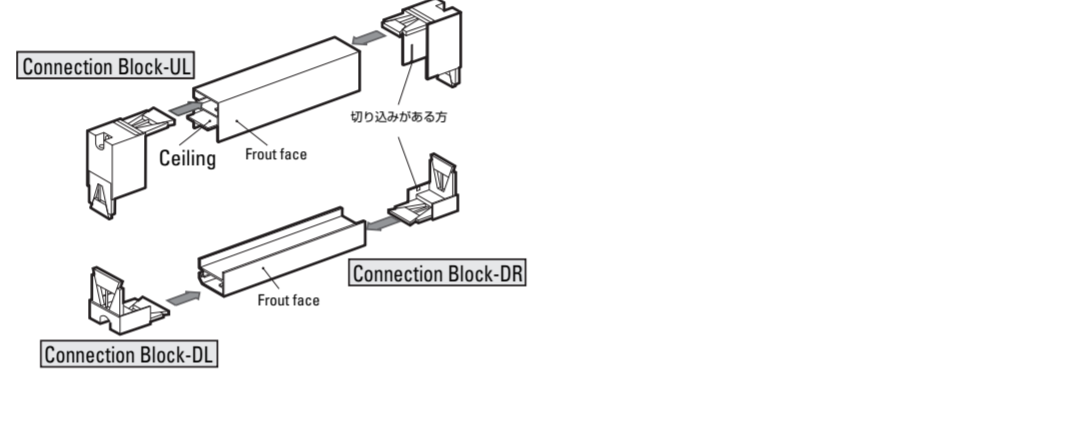
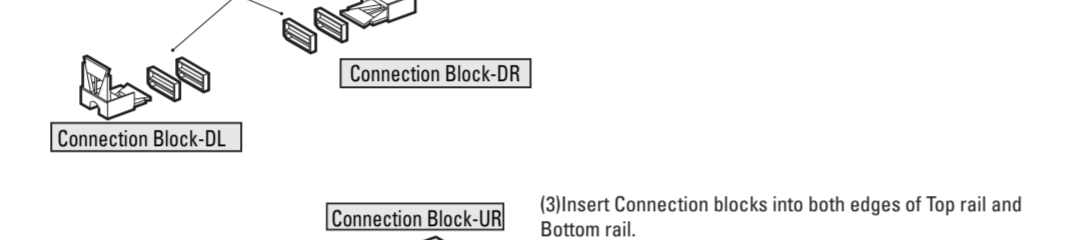
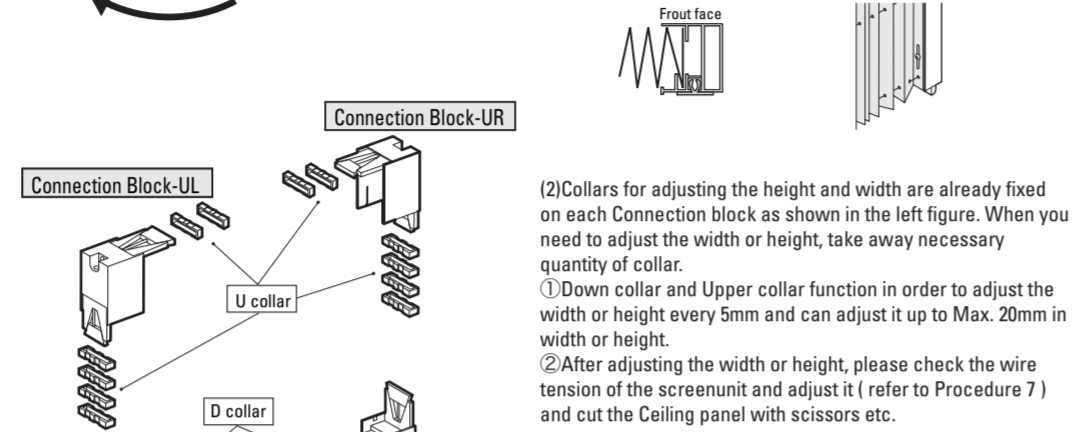
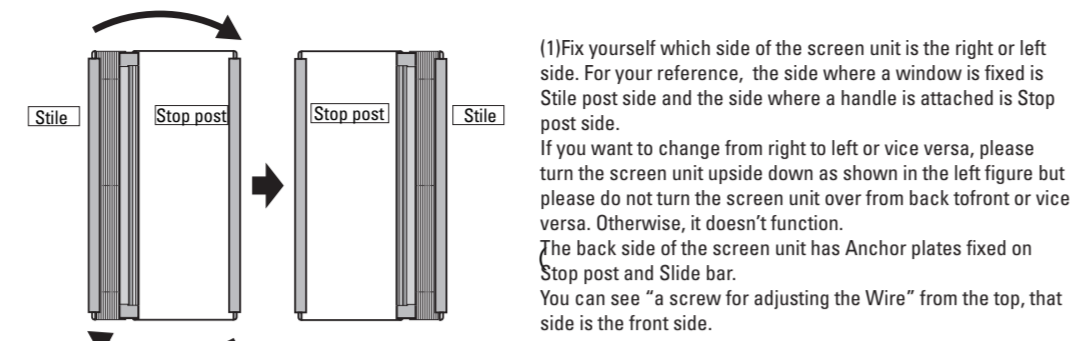
1. Configuration and part names



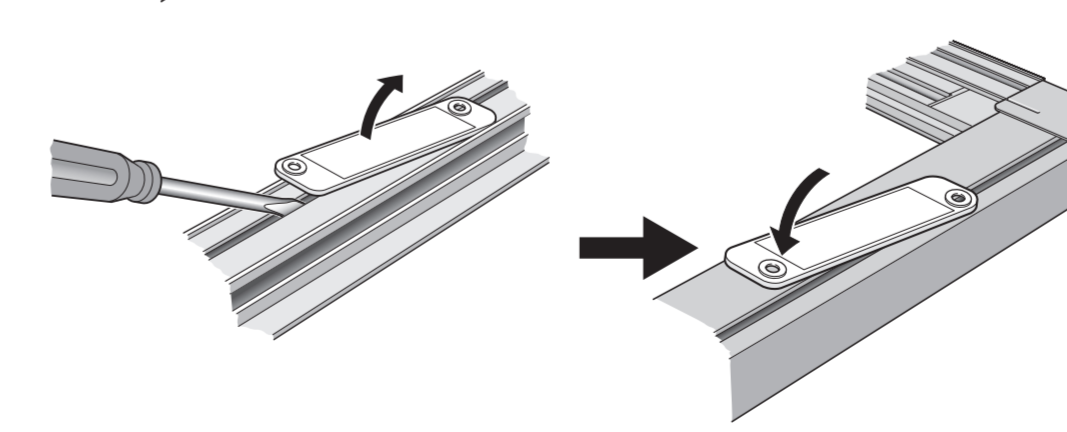
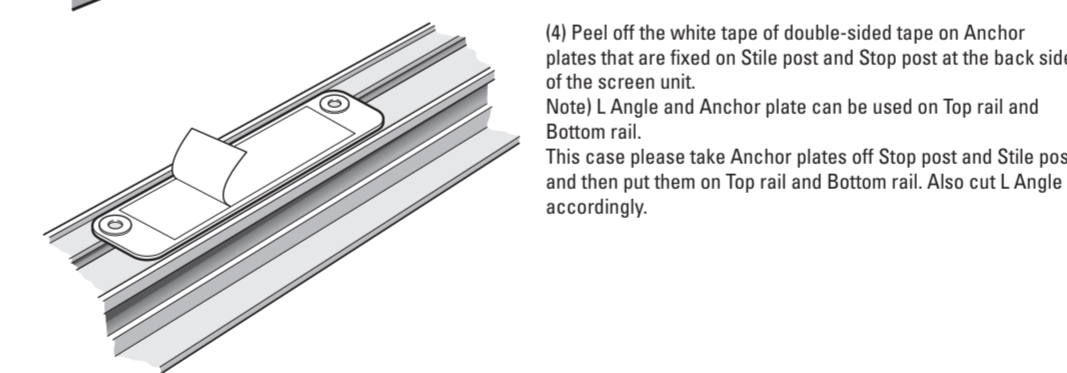
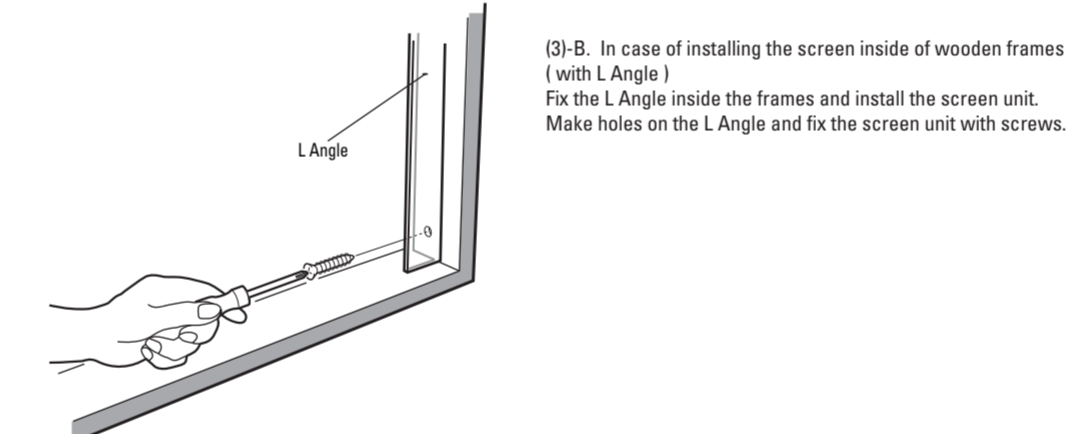
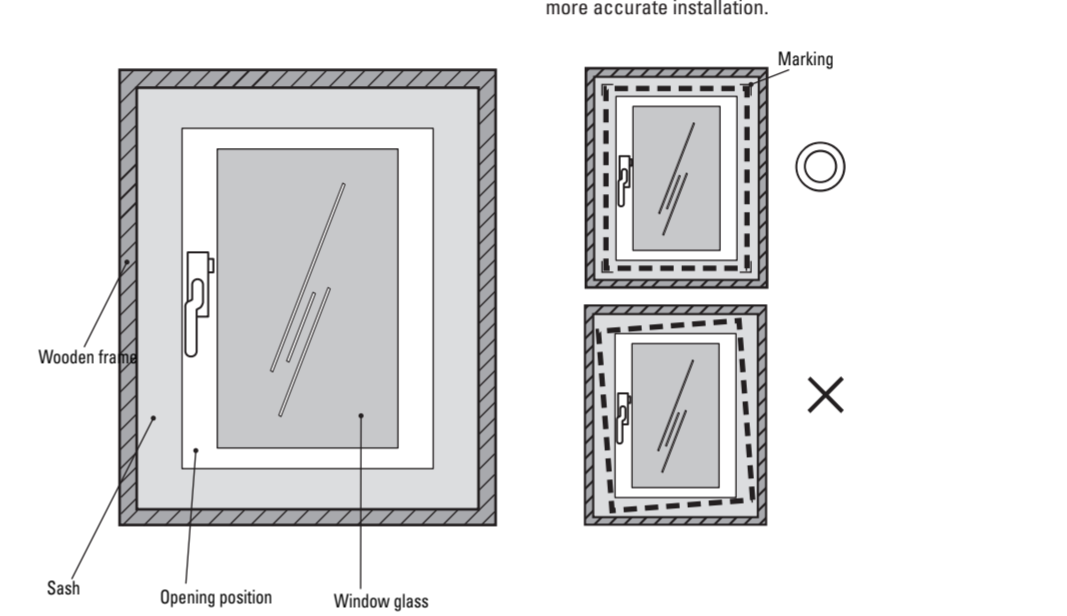
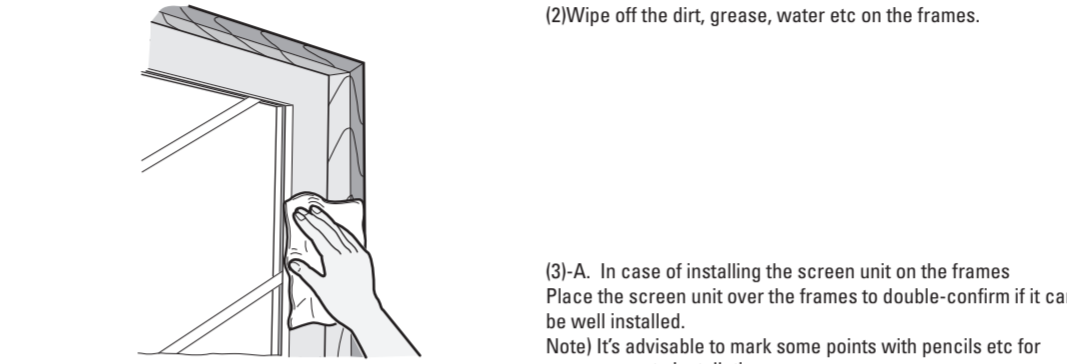
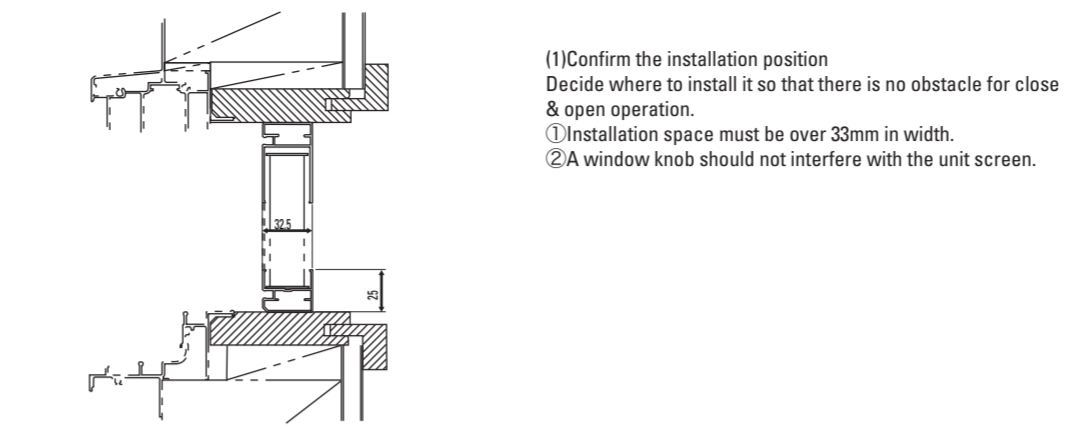
2. Package contents



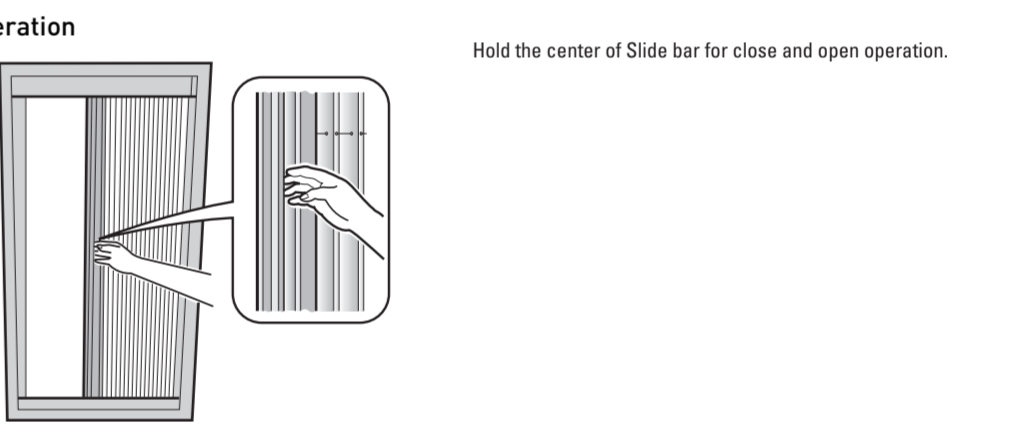
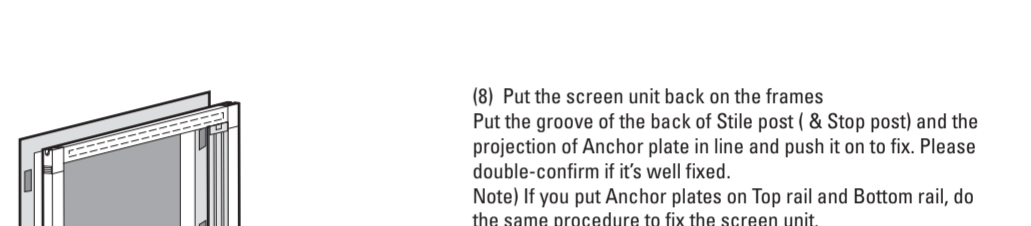
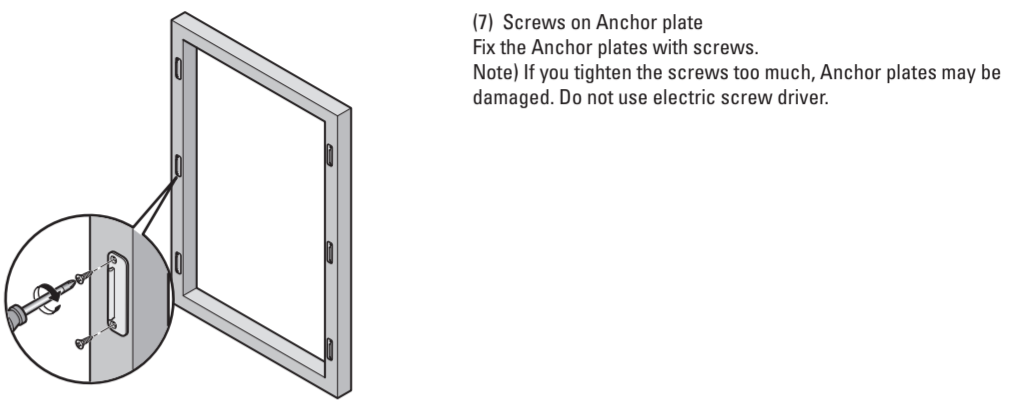
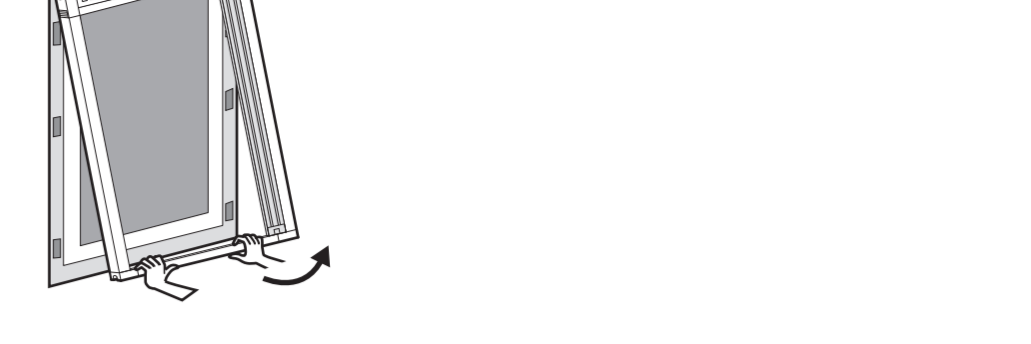
3. Installation procedure



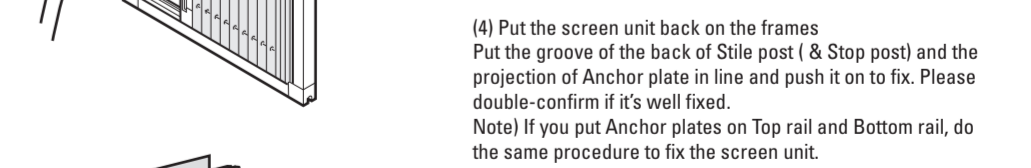
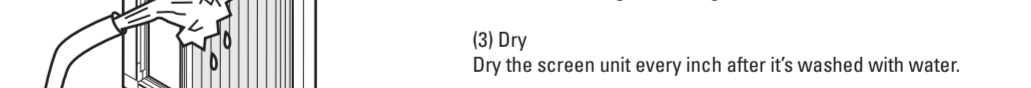
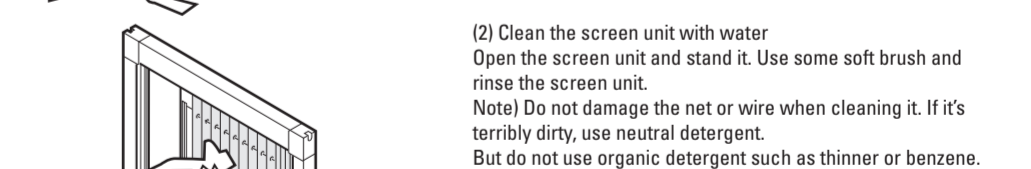
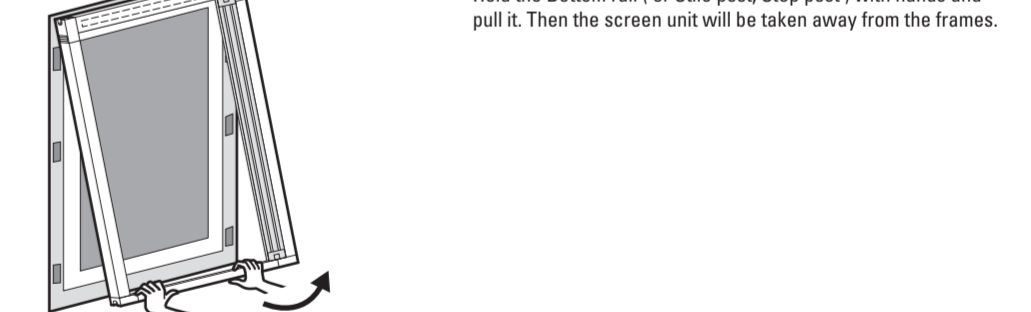
4. Installation to frames



(6) Take away the screen unit for the next procedure. Hold the Bottom rail (or Stile post, Stop post) with hands and pull it. Then the screen unit will be taken away from the frames.



6. Clean the screen unit



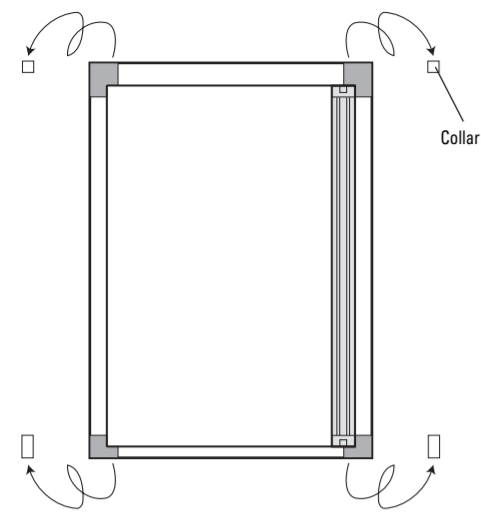
METACO inc. HEAD OFFICE

203 Nagatani Hill Plaza Roppongi, 7-3-8 Roppongi,
Minato-ku, Tokyo, 106-0032 Japan
TEL 81-3-5414-2506 FAX 81-3-3403-6498
URL <http://www.metaco.net>

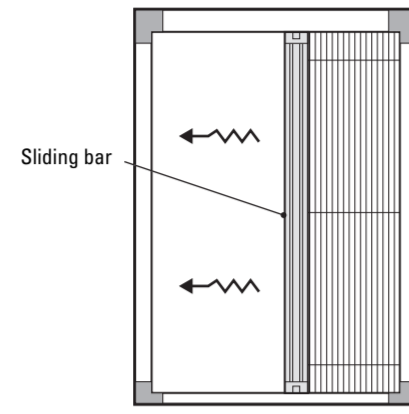
7. Adjust the wire

Please adjust the wire in case of the following problems.

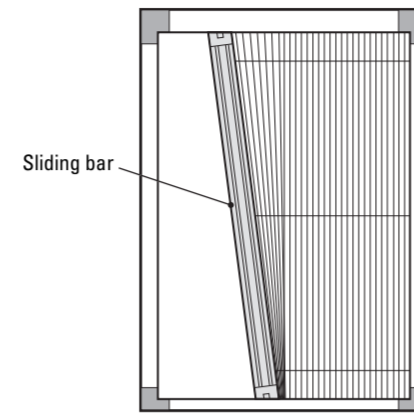
① In case you take away some adjustment collars on Connection blocks and adjust the width



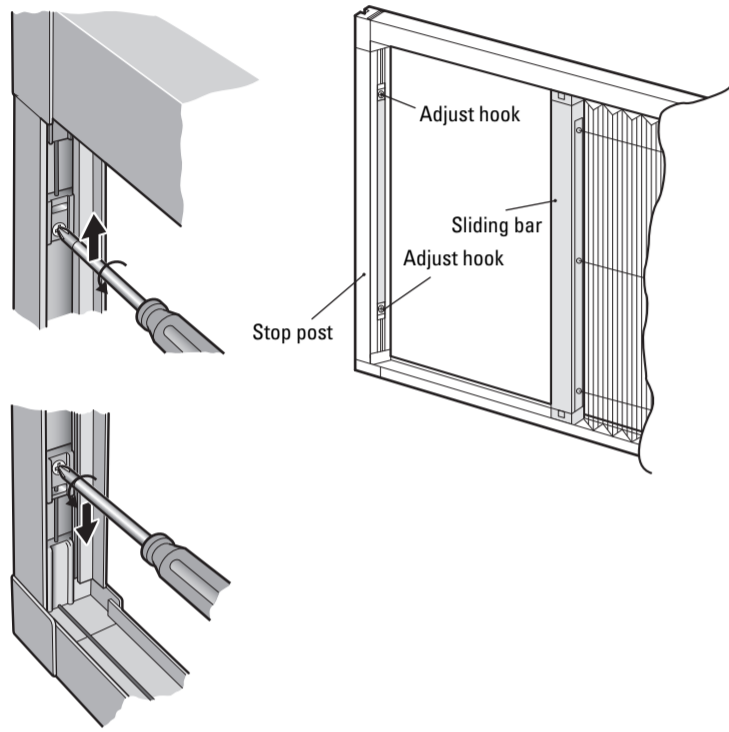
② In case Slide bar runs extremely heavy (or light)



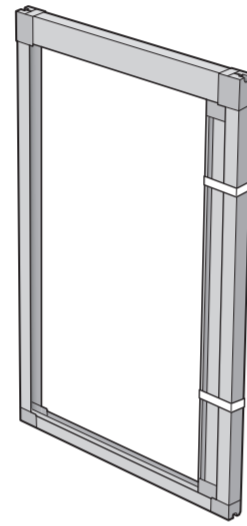
③ In case Slide bar, Stile post and Stop post are not parallel and there is a problem with the beauty or the operation of the screen unit



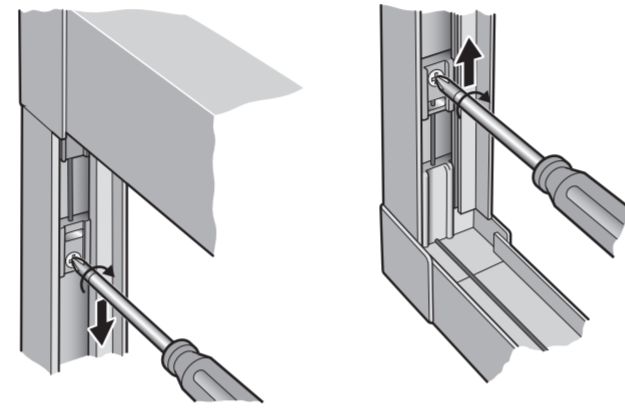
(1) Loosen the screws on Adjust hook on Stop post.



(2) Push Slide bar to Stile post closely and tape it temporarily or fix Slide bar with hand.



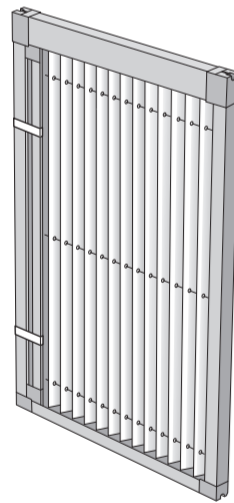
(3) Move Adjust hooks with relatively strong tension and fix Adjust hooks with screws.



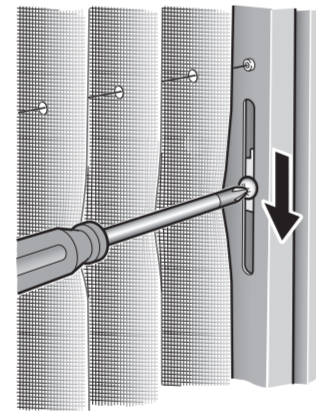
(4) Take off the tape that was used temporarily. Push Slide bar to Stile post closely and check if there is no space between them.
(5) Move Slide bar from side to side and check the operation.

When you check the tension of each wire and if it's not equal, please adjust the tension accordingly.

(1) Push Slide bar to Stile post closely and tape it temporarily or fix Slide bar with hand.



(2) Loosen the wire adjustment screw on Stile post and move it towards the direction where the wire tension gets tighter and fix it with screw.



(3) Take off the tape that was used temporarily. Move Slide bar from side to side and check if each wire tension is equal.