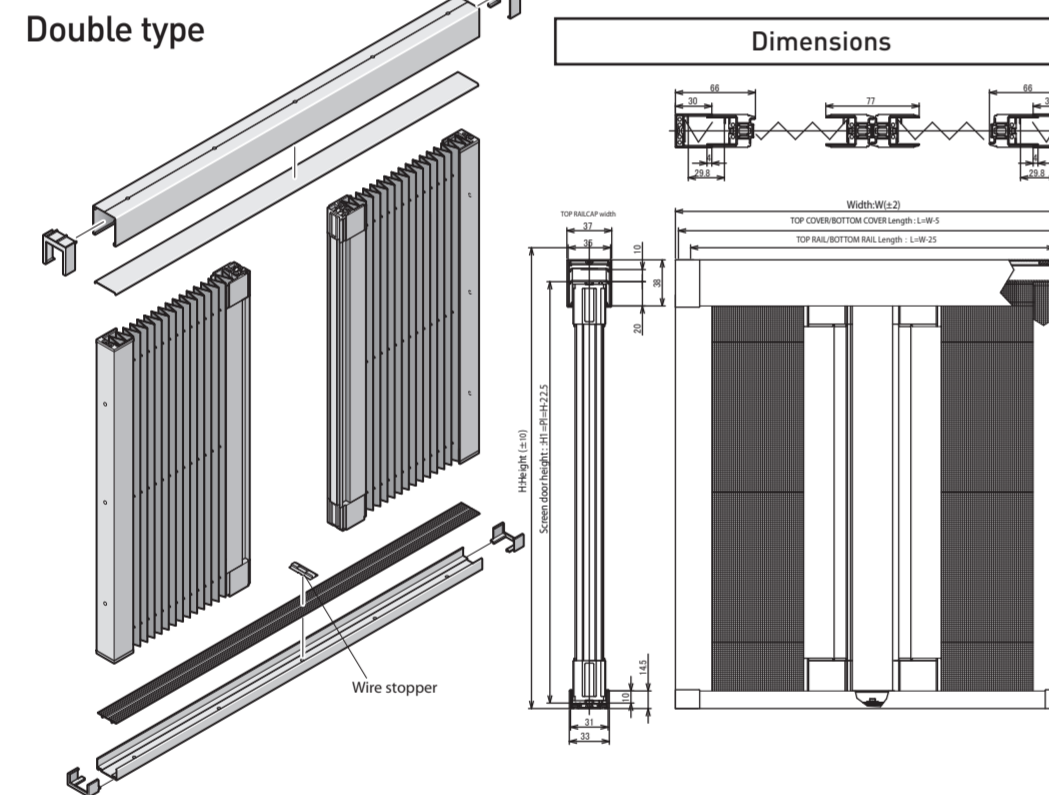
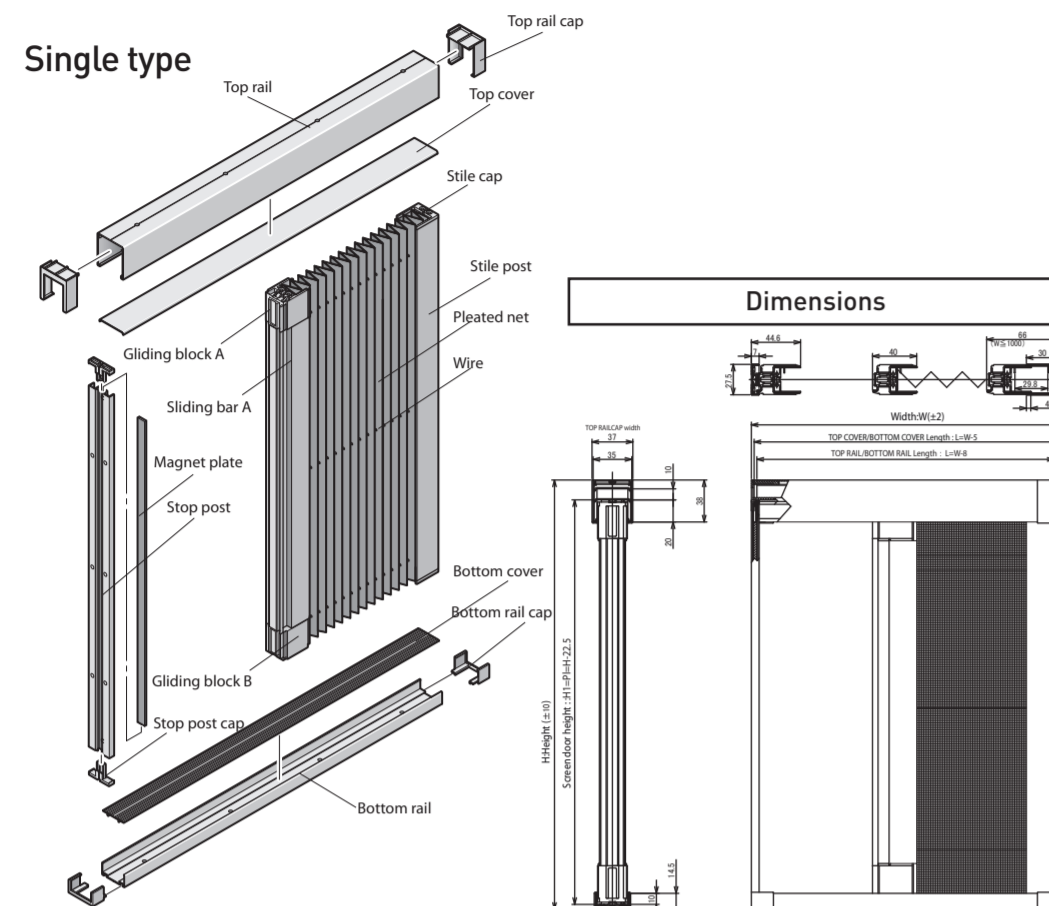


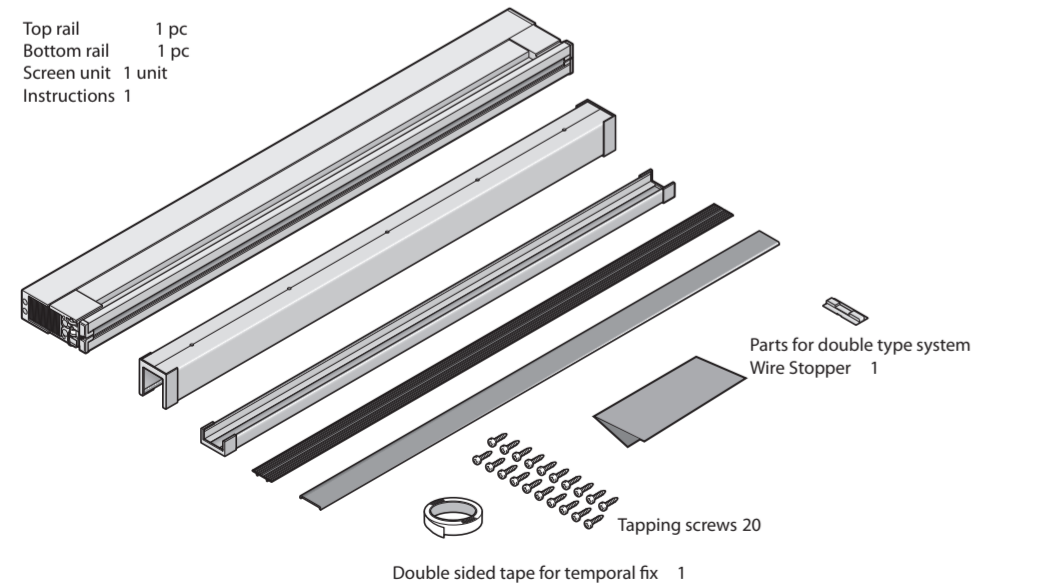
Metaco Pleated Net Side Fix Installation Guide

Thank you for purchasing a Pleat Net Side Fix. Please read carefully the installation manual for the proper installation.

Configuration and part names



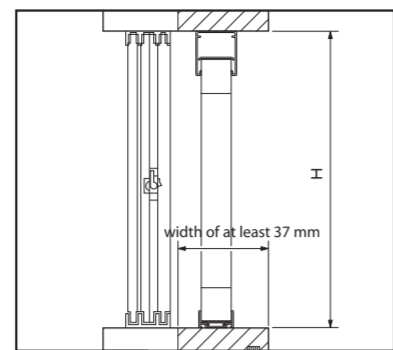
Package contents



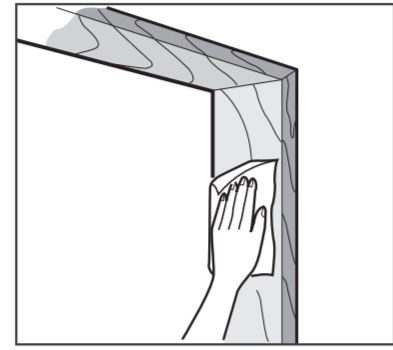
METACO inc.

HEAD OFFICE TEL +81-3-5414-2506 FAX +81-3-3403-6498
203 Nagatani Hill Plaza Roppongi, 7-3-8 Roppongi, Minato-ku, Tokyo, 106-0032 Japan
URL <http://www.metaco.net>

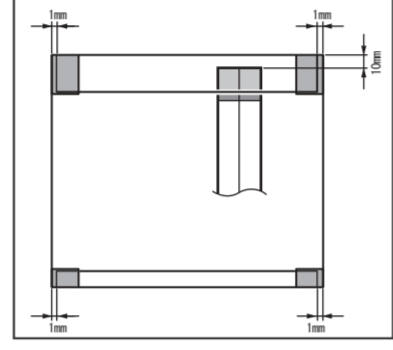
Installation



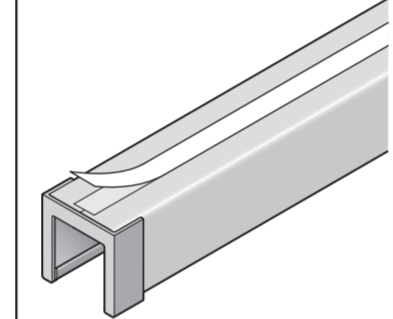
1. Reconfirm the installation location. Find the installation position so that there is no obstacle for the close & open operation of the insect screen.
 - ① Check if there is no obstacle on the frame or at the floor and if there is more than 37mm space for the installation.
 - ② No obstacle interferes with the insect screen installed.
 - ③ All 4 frames are right-angled at the opening.



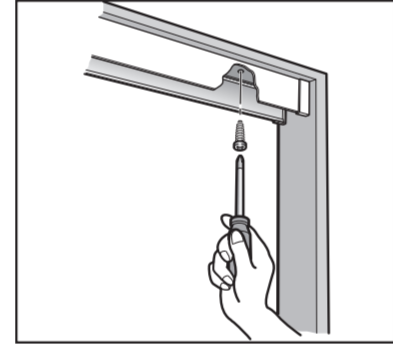
2. Clean the installation surfaces. Wipe away all oil residue, dust, water, sand and mud from the installation surface and the floor and then wipe these surfaces with a dry cloth to ensure that the product is installed properly.



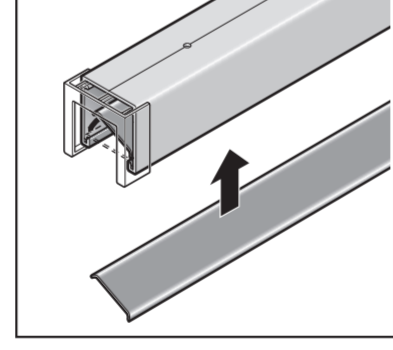
3. Size adjustment You can adjust 10mm (only minus 10mm but plus 10mm) in height.



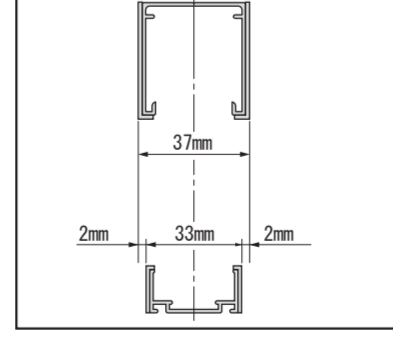
4. the top rail
 - ① Provisionally stick the double-sided tape on top of Top rail and peel off the white tape. Check if Top rail caps are deeply inserted and stick Top rail on the ceiling provisionally so that the space on the left and right side is equal. (Note) Don't tilt or don't install the insect screen diagonally. It may affect the close & open operation.



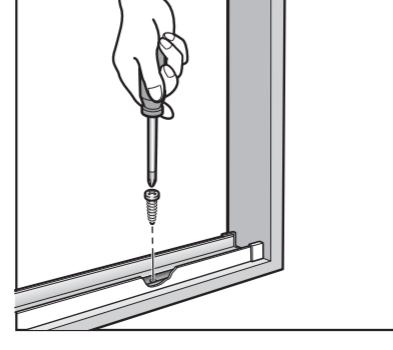
- ② Fix the Top rail with tapping screws. (Note) Do not screw too tightly till Top rail is bent. Push the Top rail caps onto the frames on both sides till no space is found.



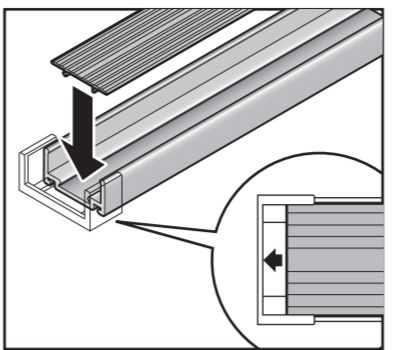
5. Install Top rail cover
 - ① Cut the Top cover with scissors so that the length is the installation width minus 5mm. (Note) Do not cut it too short. Then there will be space between Top rail and Top rail cap.
 - ② Insert Top rail cover inside Top rail.



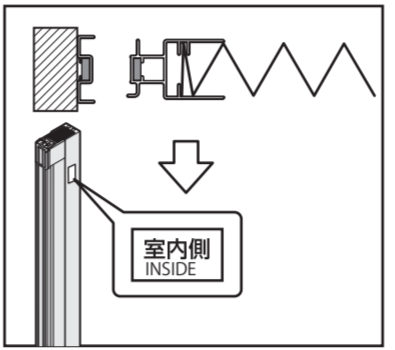
6. Bottom rail
 - ① Fix Bottom rail in line with Top rail as shown in the left figure.



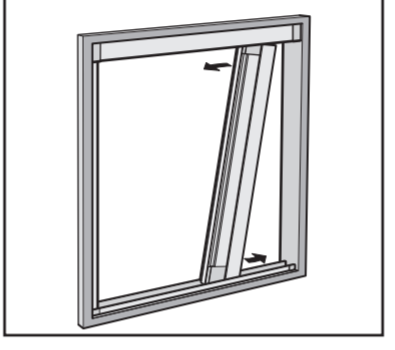
- ② Fix it with tapping screws.
- ③ Push Bottom rail caps onto the frames on both sides till no space is found.



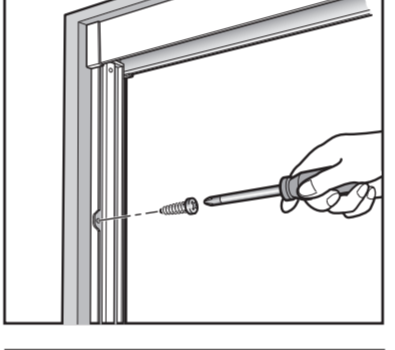
7. Bottom rail cover
 - ① Cut Bottom cover with scissors so that the length is the installation width minus 5mm. (Note) Do not cut it too short. Then there will be space between Bottom rail and Bottom rail cap.
 - ② Push Bottom cover on Bottom rail till it surely clicks so that no space between Bottom rail and Bottom rail cap.



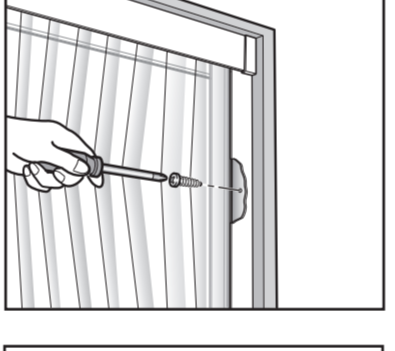
- 8-A. Insect screen (single use)
 - ① Confirm which side is Stile post side and which is Slide bar side. (Note) You can decide which is which as there is no Top side or Bottom side on this insect screen. There is no problem if you use whichever side. The side on which you see the "INSIDE" sticker is installed towards inside the room.



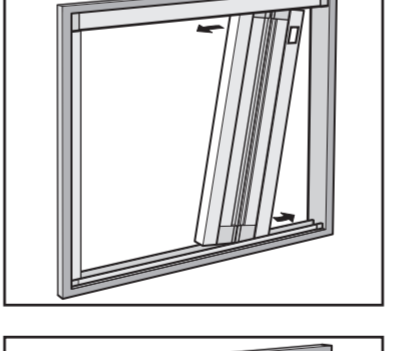
- ② Tilt the insect screen and insert it diagonally.



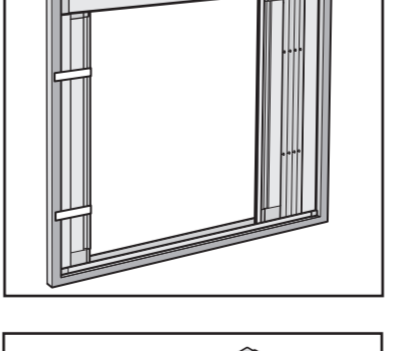
- ③ Use the double-sided tape to stick it provisionally so that Stile post doesn't fall down and fix Stop post with tapping screws.



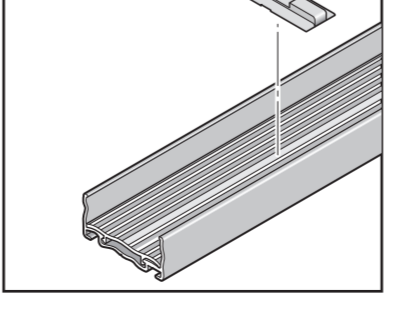
- ④ Take the tape off the insect screen, close it some 20 to 30cm and then fix Stile post with tapping screws.



- 8-B. Insect screen (double use)
 - ① Confirm that "INSIDE" sticker faces inwards the room. Then tilt the insect screen and insert it diagonally.

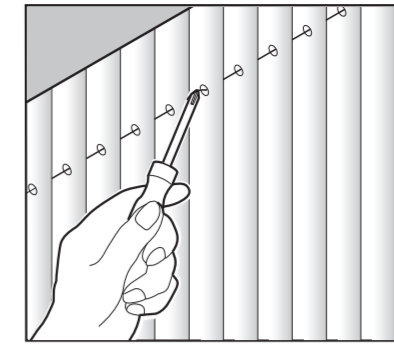


- ② Fix both Stile posts with tapping screws. As shown in the left figure, use the tape so that the insect screen on the other side doesn't fall down.

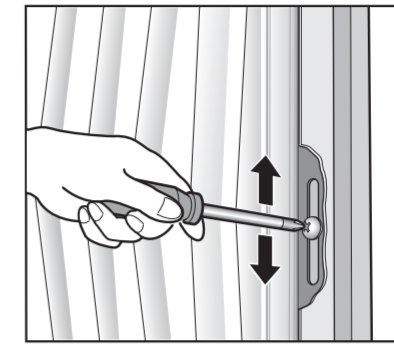


- ③ Stick Wire stopper over the wire at the center of Bottom rail.

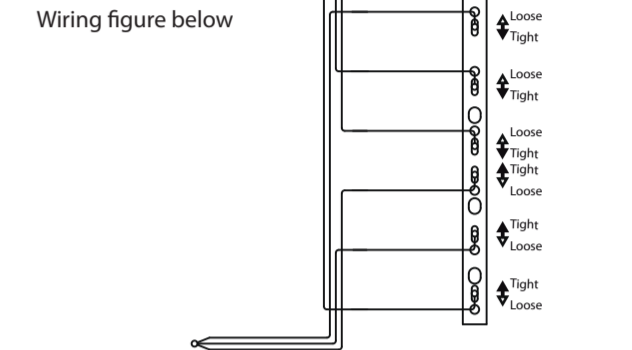
Adjusting the Wire Guide



If you make the product width shorter, the wire adjustment is necessary.
Wire tension adjustment
① If the wire tension through the PP net is too tight, the operation gets heavy and vice versa. Try to make the wire tension the most adequate (not too tight, not too loose).
② Touch naturally the wire with something like a screw driver from below to achieve the adequate wire tension.

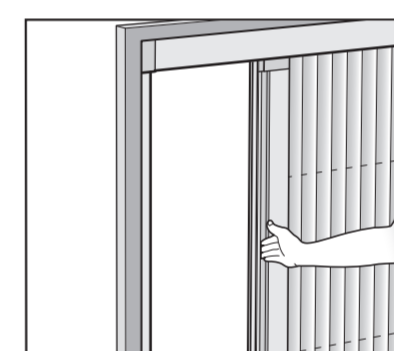


- ③ The screws for adjustment are inside Stile post. Use the screw driver to loosen it a little and move the screw upwards or downwards (refer the direction to the Wiring figure below).
- ④ After the adjustment, screw it to fix.
- ⑤ Slide the Slide bar from side to side to check the operation. In case of double door, do the wire adjustment on either one



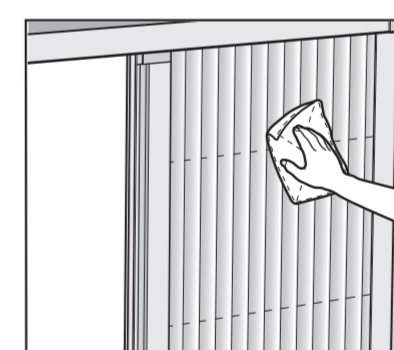
Final confirmation on the installation completion
The installation is complete. Please confirm the following points before its delivery to clients.
① Open and close the insect screen several times and check if it operates normally.
② Check if there is any problem with the installation of Top rail and Bottom rail.
③ Check if there is any scratch or bend on aluminum profiles.
④ Check if there is any unnecessary space between aluminum profiles and frames etc. If you find any defectives, adjust it yourself or contact a sales distributor.

Opening and closing the screen unit



Hold the center of Slide bar and do the open & close operation. (Note) If you hold it too high or too low, it may affect the operation.

Regular Care



Clean the insect screen
Wipe the screen with the cloth dipped in water.